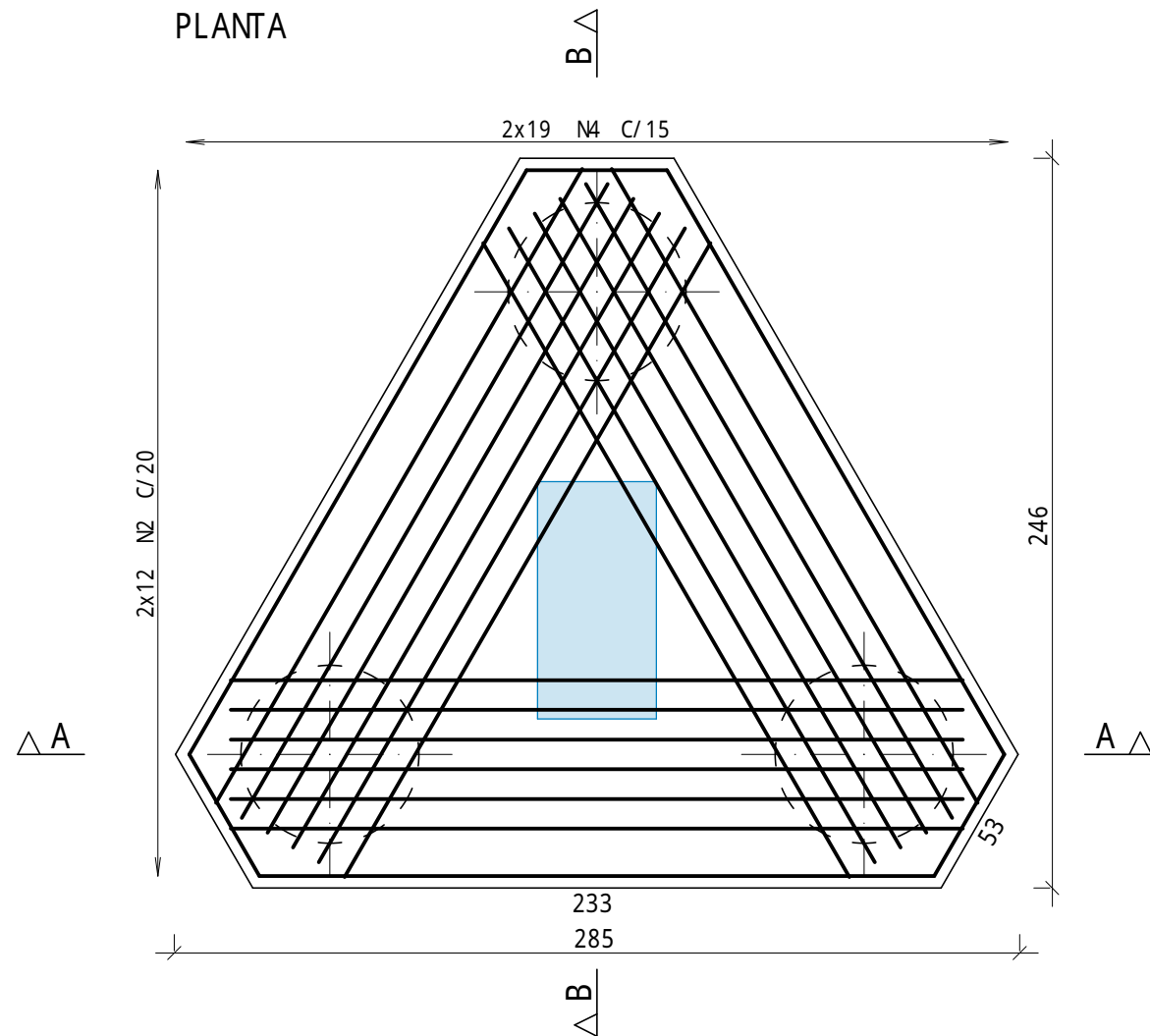
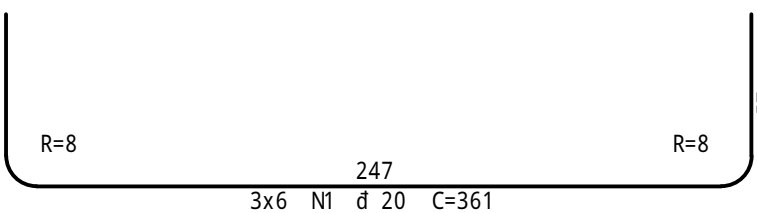
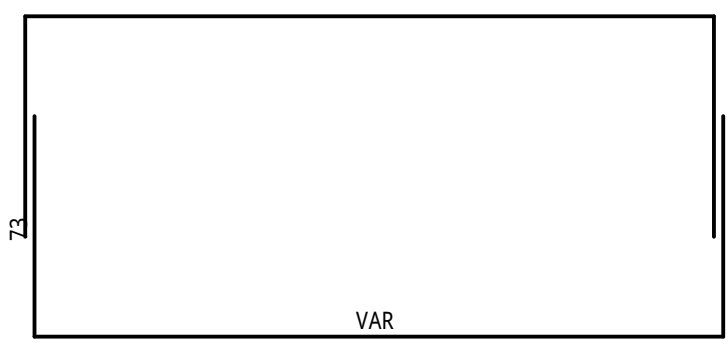
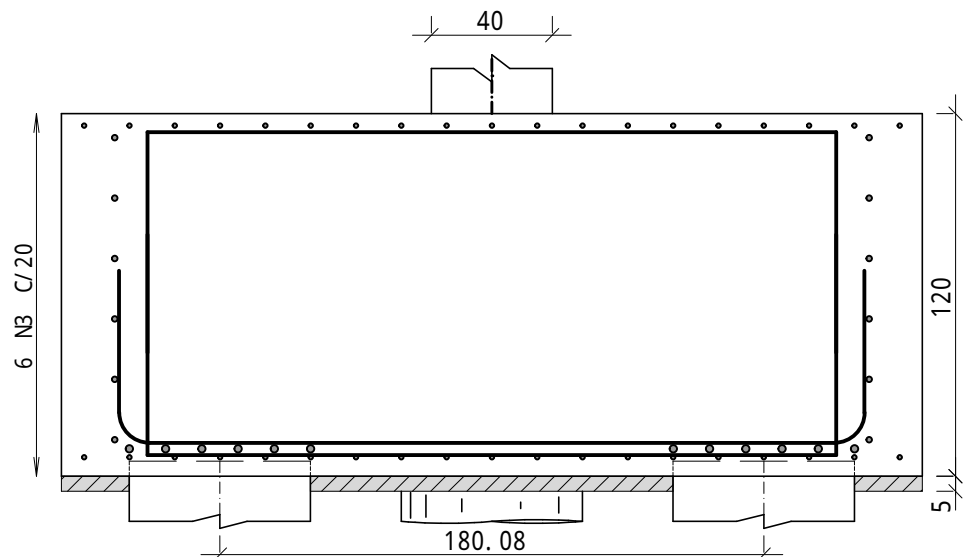


B15  
(ESCALA 1: 25)

PLANTA

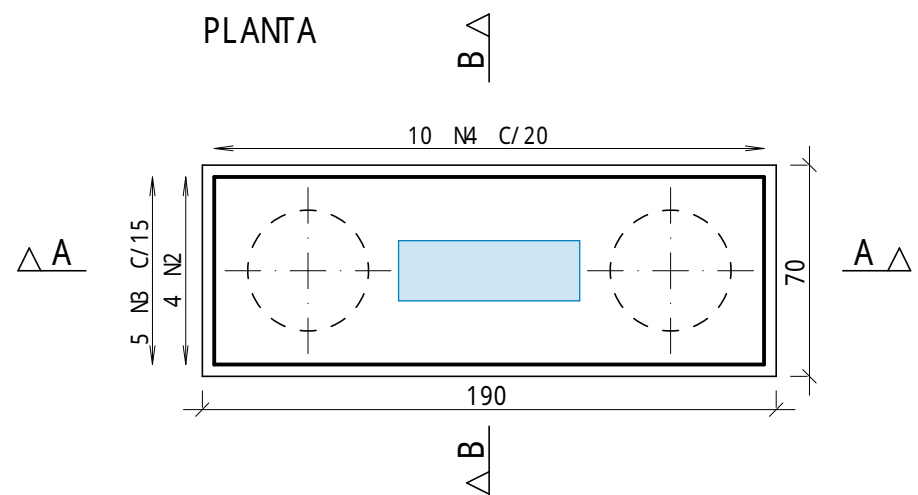


CORTE A - A

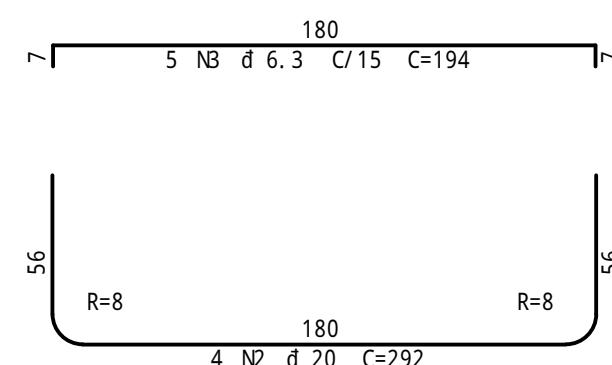
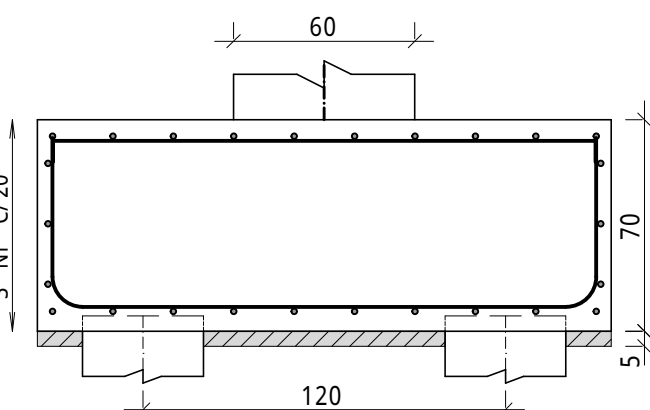


B17  
(ESCALA 1: 25)

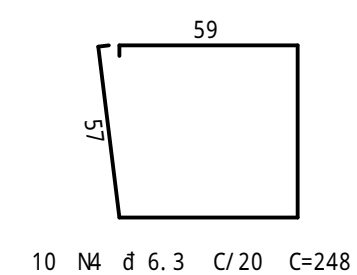
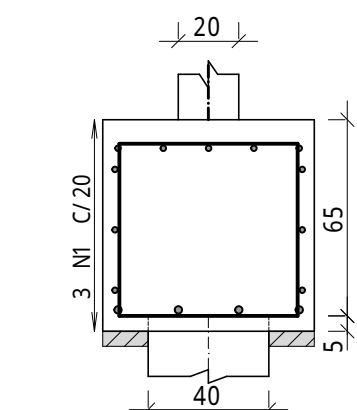
PLANTA



CORTE A - A

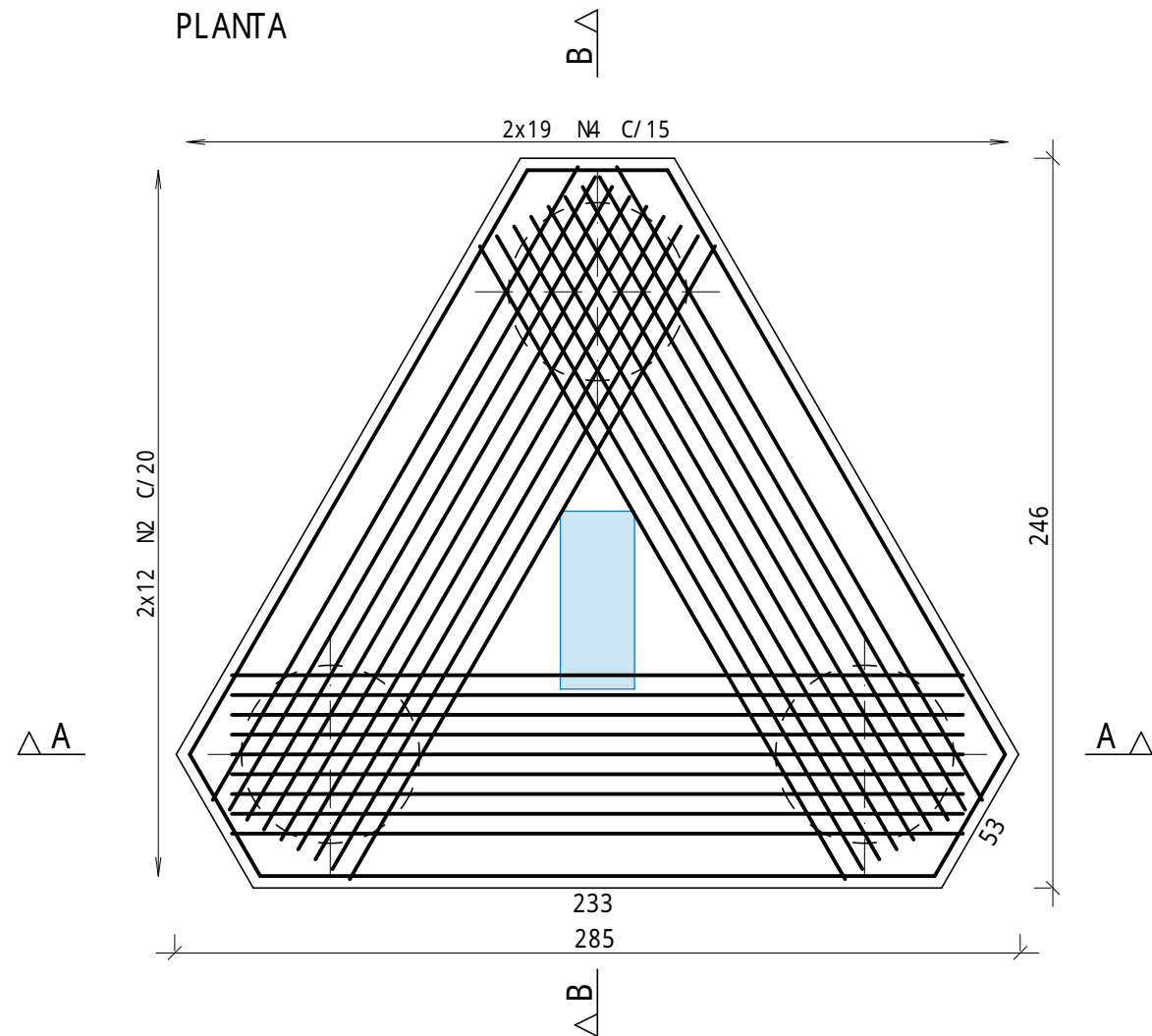


CORTE B - B

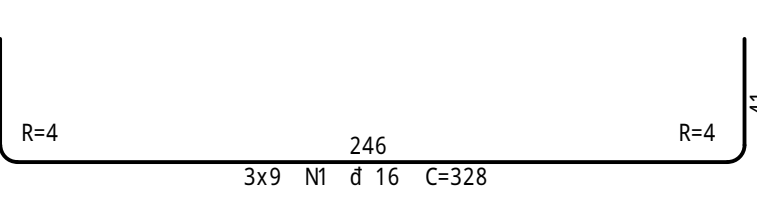
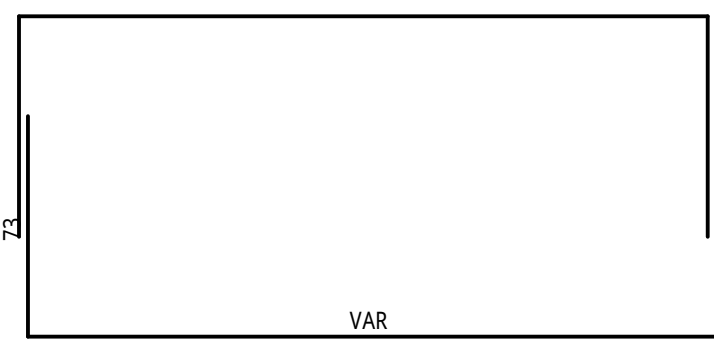
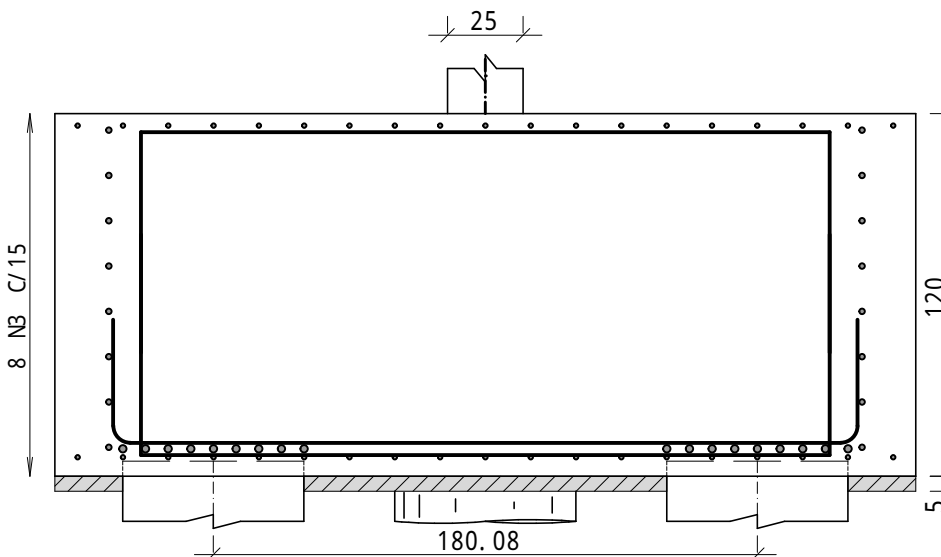


B16  
(ESCALA 1: 25)

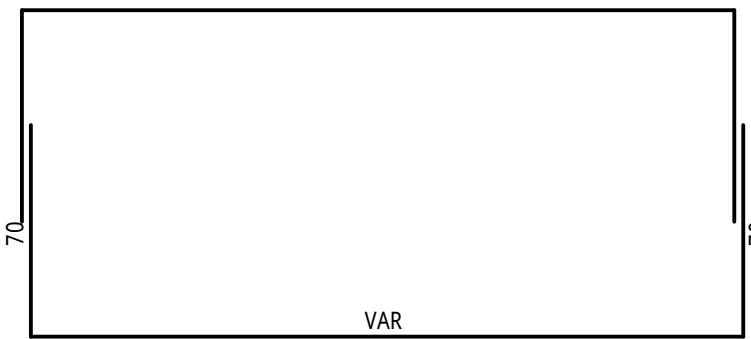
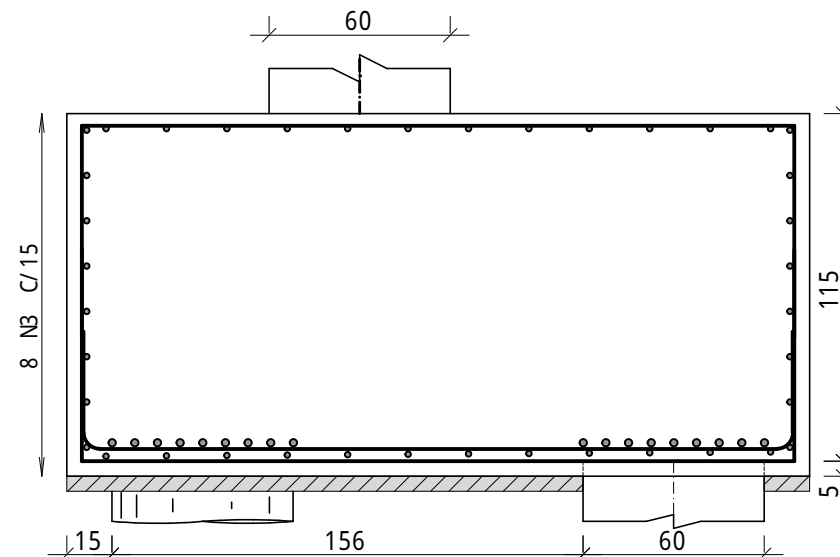
PLANTA



CORTE A - A

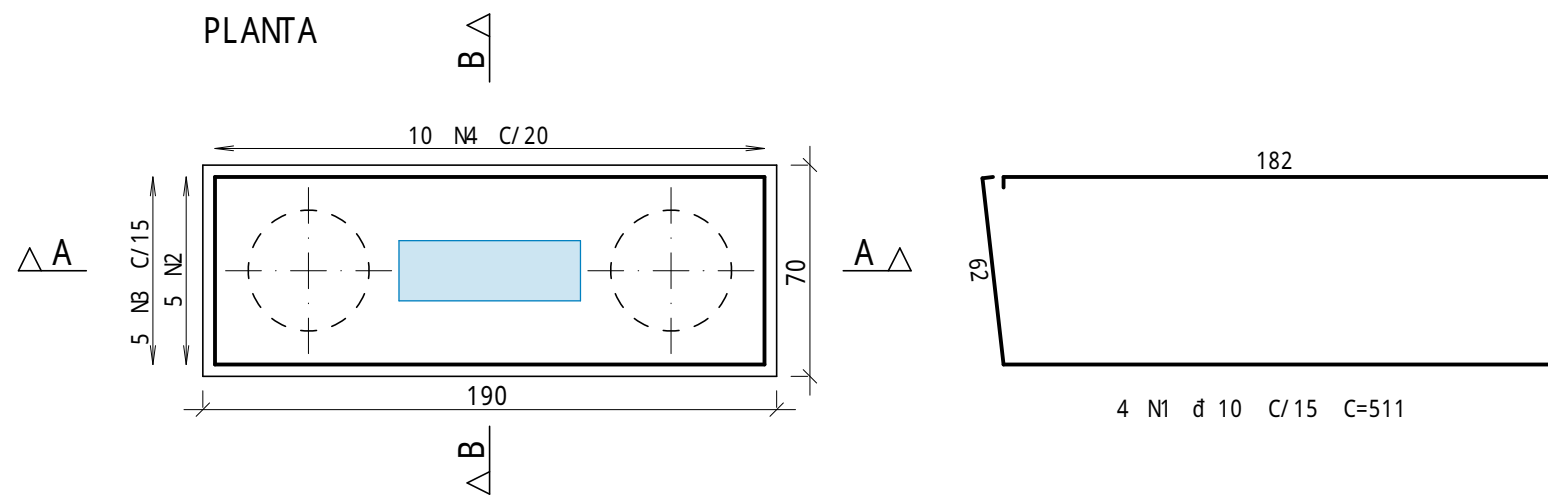


CORTE B - B

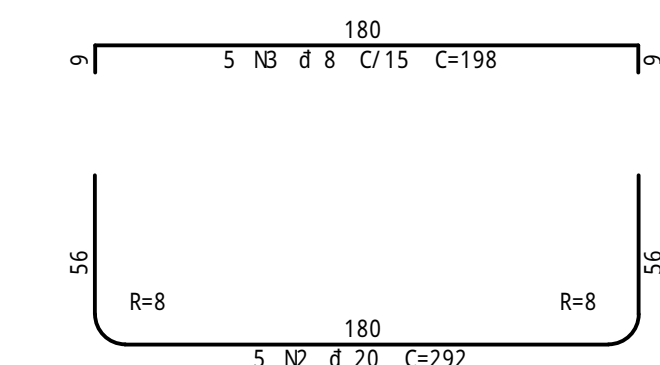
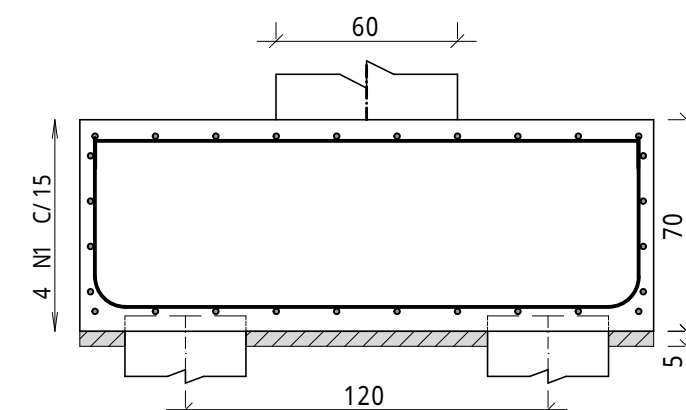


B18  
(ESCALA 1: 25)

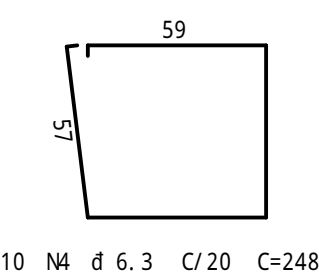
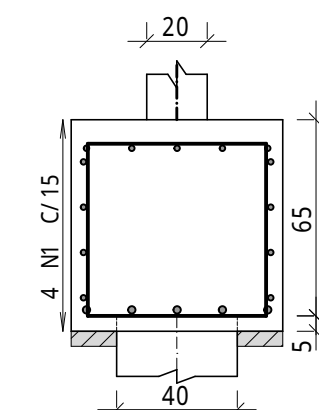
PLANTA



CORTE A - A



CORTE B - B



	A=O	POS	BIT	QUANT	COMPRIMENTO	
					UNIT	TOTAL
mm						
cm						
cm						
B15	50A	1	20	18	361	6498
	50A	2	10	24	--VAR-	7776
	50A	3	12.5	6	852	5112
	50A	4	8	38	--VAR-	11058
B16	50A	1	16	27	328	8856
	50A	2	10	24	--VAR-	7776
	50A	3	10	8	845	6760
	50A	4	8	38	--VAR-	11058
B17	50A	1	10	3	511	1533
	50A	2	20	4	292	1168
	50A	3	6.3	5	194	970
	50A	4	6.3	10	248	2480
B18	50A	1	10	4	511	2044
	50A	2	20	5	292	1460
	50A	3	8	5	198	990
	50A	4	6.3	10	248	2480

RESUMO DE A=O			
A=O	BIT	COMPR	PESO
	mm	m	kgf
50A	6.3	59	15
50A	8	231	91
50A	10	259	160
50A	12.5	51	49
50A	16	89	140
50A	20	91	225
Peso Total		50A =	680 kgf

OBSERVAÇÕES GERAIS	
<ul style="list-style-type: none"><li>- Medir das cotas em cm (exceto onde indicado);</li><li>- Verificar medi das na obra;</li><li>- Mobar formas antes da concretagem;</li><li>- Usar espaldores para garantir o cobrimento do a'o;</li><li>- Nas arm pes negativas das lajes: usar "carangueijos";</li><li>- Curar m m m: 7 d s;</li><li>- Desmoldamento (formas): m m m 28 dias;</li><li>- Todas as pes de concreto em contato com o solo devem ser executadas sobre laastro de concreto mgro (e=5cm);</li><li>- Nas balan os: retirar as escoras da extremidade livre para a zona de apoio, nesta ordem;</li><li>- A classe de agressividade ambiental foi considerada III de acordo com o item 6.4 da NBR 6118:2023;</li><li>- Este projeto est de acordo com as normas pertinentes relacionadas ao projeto de estruturas, dentre as quais:</li></ul>	
NBR 6118:2023 - Projeto de estruturas de concreto - Procedimento	
NBR 6120:2023 - Projeto e execu o de funda es	
NBR 6120:2019 - A Pes para o clculo de estruturas de edifica es I	

ESPECIFICAÇÕES TÉCNICAS GERAIS			
fck:		COBRIMENTO	
AGREGADO GRAUO:		(exceto quando l ndi cado)	
SLUMP:		VI GAS:	40 mm
CAA:		LAJ ES:	35 mm
FATOR A/C:		CONTE N O:	40 mm
<0,55		PILARES EM CONTATO COM SOLO:	45 mm
(exceto quando l ndi cado)		A=Q:	CA 50 e CA 60 (vide tabelas de ferros)

R04		
R03		
R02		
R01		
R00	01/09/2025	PROJETO EXECUTIVO - LICITAÇÃO DA OBRA
revis o	data	descri o

OBJETO: SEDE DAS PROMOTORIAS DE JUSTIÇA DE IPATINGA-MG

AV. DESPACHANTE RUI D'ALMA BARBOSA, Nº31 - CENTRO - IPATINGA/MG

MINISTÉRIO PÚBLICO DE MINAS GERAIS			
CONTEÚDO: ARMAÇÃO DE BLOCOS			
AUTOR DO PROJETO: RHAU DE ALMEIDA CARDOSO		ASSINATURA: EST	
RESPONSÁVEL TÉCNICO: RHAU DE ALMEIDA CARDOSO		ASSINATURA: ETAPA DO PROJETO EXECUTIVO	
ENGENHEIRO CIVIL: ANDRE VASCONCELOS LAPREGA		FOLHA: 013/108	
COORDENADOR DO PROJETO: ANDRE V. LAPREGA		CARGO DO PROJETO: 1056/2023	
ARQUITETO E URBANISTA: RHAU CARDOSO		DESENHO: 1: 25	